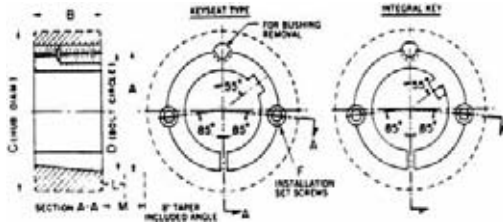




TAPER-LOCK Bushings - Dimensions

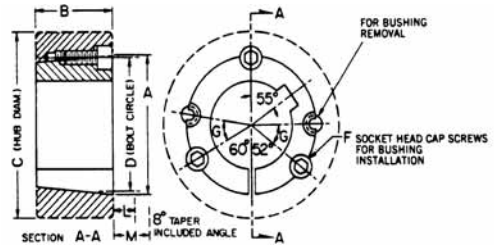
1008 thru 3030 sizes



DIMENSIONS FOR 1008 THRU 3030 TAPER-LOCK BUSHINGS

Bush No.	RATINGS (Lb-in)		A	B	C Hub Dia. ■		D	F †		L ●		M ★	
	Torque Capacity u	Wrench Torque Install Screws			CL 30 Iron	Steel		Qty.	Size	Std. Hex Key	Short Keys	Std. Hex Key	Short Keys
1008	1200	55	1.386	.87	2.19	1.94	1-21/64	2	1/4 x 1/2	1.13	.63	1.25	.75
1108	1300	55	1.511	.87	2.31	2.06	1-29/64	2	1/4 x 1/2	1.13	.63	1.25	.75
1210	3600	175	1.87	1.00	3.25	2.88	1-3/4	2	3/8 x 5/8	1.38	.81	1.63	1.1
1215	3550	175	1.87	1.50	2.88	2.63	1-3/4	2	3/8 x 5/8	1.38	.81	1.63	1.1
1310	3850	175	2.0	1.00	3.38	3.00	1-7/8	2	3/8 x 5/8	1.38	.81	1.63	1.1
1610	4300	175	2.25	1.00	3.63	3.25	2-1/8	2	3/8 x 5/8	1.38	.81	1.63	1.1
1615	4300	175	2.25	1.50	3.25	3.00	2-1/8	2	3/8 x 5/8	1.38	.81	1.63	1.1
2012	7150	280	2.75	1.25	4.38	3.88	2-5/8	2	7/16 x 7/8	1.56	.94	2.00	1.38
2517	11600	430	3.38	1.75	4.88	4.38	3-1/4	2	1/2 x 1	1.63	1.00	2.25	1.63
2525	11300	430	3.38	2.50	4.50	4.25	3-1/4	2	1/2 x 1	1.63	1.00	2.25	1.63
3020	24000	800	4.25	2.00	6.25	5.63	4	2	5/8 x 1-1/4	1.81	1.19	2.69	2.1
3030	24000	800	4.25	3.00	5.75	5.38	4	2	5/8 x 1-1/4	1.81	1.19	2.69	2.1

3535 thru 5050 Size



DIMENSIONS FOR 3535 THRU 5050 TAPER-LOCK BUSHINGS

Bush No.	RATINGS (Lb-in)		A	B	C Hub Dia. ■		D	F †		G	L ●		M ★	
	Torque Capacity u	Wrench Torque Install. Screws			CL 30 Iron	Steel		Qty.	Size		Std. Hex Key	Short Keys	Std. Hex Key	Short Keys
3535	44,800	1,000	5.00	3.50	7.00	6.5	4.83	3	1/2 x 1-1/2	39	2.00	1.31	3.38	2.69
4040	77,300	1,700	5.75	4.00	8.50	7.75	5.54	3	5/8 x 1-3/4	40	2.38	1.63	4.13	3.38
4545	110,000	2,450	6.38	4.50	9.50	8.75	6.13	3	3/4 x 2	40	2.63	1.94	4.75	4.10
5050	126,000	3,100	7.00	5.00	10.50	9.50	6.72	3	7/8 x 2-1/4	37	2.81	2.31	5.25	4.81

- Note:** For dimensions required for machining hubs, consult factory.
- Hub diameter required depends on the application. Hub diameter shown is based on 30,000 P.S.I. minimum ultimate tensile strength.
 - ◆ Important: refer to service factor information on page PT6-4.
 - Space required to tighten bushing. Also space required to loosen screws to permit removal of hub by puller.

- ★ Space required to remove bushing using jackscrews-no puller required
- ▲ Standard hex key cut to minimum usable length.
- † Use in position shown in drawing above for tightening bushing on shaft. When loosening bushing remove screws and use all except one in the other holes.

T-L STOCK SIZES PAGE PT6-5	OD METRIC BORES PAGE PT6-22	OD HUBS PAGE PT6-25	T-L HUBS PAGE PT6-12
-------------------------------	--------------------------------	------------------------	-------------------------

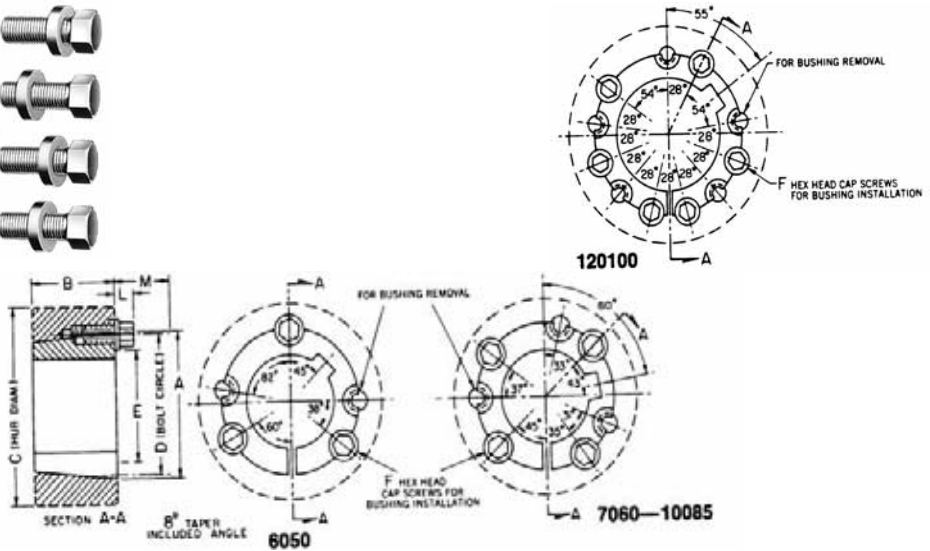


SPECIFICATION



TAPER-LOCK Bushings - Dimensions

6050 thru 120100 Sizes



DIMENSIONS FOR 6050 THRU 120100 TAPER-LOCK BUSHINGS

Bush No.	RATINGS (Lb-in)		A	B	C Hub Dia. ■		D	E	F †		L •	M ★
	Torque Capacity ♦	Wrench Torque Install. Screws			CL 30 Iron	Steel			Qty.	Size		
6050	282,000	7,820	9.25	5.0	15.5	13.5	9.0	6.75	3	1-1/4 x 3-1/2	1.63	4.38
7060	416,000	7,820	10.25	6.0	17.0	14.8	10	7.75	4	1-1/4 x 3-1/2	1.63	4.38
8065	456,000	7,820	11.25	6.5	17.5	15.5	11	8.75	4	1-1/4 x 3-1/2	1.63	4.38
10085	869,000	13,700	14.75	8.5	22.0	19.5	14.5	11.75	4	1-1/2 x 4-1/4	2.00	5.38
120100	1520,000	13,700	17.25	10	26.0	23.0	17	14.25	6	1-1/2 x 4-1/4	2.00	5.38

Note: For dimensions required for machining hubs, consult factory.

■ Hub diameter required depends on the application. Hub diameter shown is based on 30,000 P.S.I. minimum ultimate tensile strength.

† Use in position shown in drawing above for tightening bushing on shaft. When loosening bushing remove screws and use all except one in the other holes.

- Space required to tighten bushing. Also space required to loosen screws to permit removal of hub by puller.
- ★ Space required to loosen bushing using screws as jackscrews - no puller required.
- ♦ Peak torque loads must not exceed torque capacity rating shown. Capacity values shown are for light starting and steady running conditions. For more severe

duty, divide torque capacity by service factor suggested in following table.

SERVICE FACTOR	TYPE OF LOADING
1.00	LIGHT STARTING & STEADY RUNNING
1.50	LIGHT STARTING & UNEVEN RUNNING
2.00	FAIRLY HEAVY STARTING & STEADY OR UNEVEN RUNNING
2.50	LIGHT OR HEAVY STARTING & MODERATE SHOCK RUNNING
3.00	LIGHT OR HEAVY STARTING & SEVERE SHOCK RUNNING, OR REVERSING LOADS.



TAPER-LOCK Bushings - Stock Bore

TL Bush Size	BORE	P/N Integral Key	P/N Keyway	WT.	Bushing Keyway	Shaft Keyway REF	Key Size REF
1008	1/2"		119176	0.3	1/8 x 1/16	1/8 x 1/16	1/8 x 1/8
	9/16"		119177	0.3			
	5/8"		117073	0.3			
	11/16"		119179	0.2			
	3/4"	119180	117150	0.2	3/16 x 3/32	3/16 x 3/32	3/16 x 3/16
	13/16"		119181	0.2			
	7/8"	119182	117074	0.2			
	15/16" #		119183	0.2	1/4 x 1/16	1/4 x 1/8	1/4 x 3/16 Δ
	1" #	119184	117151	0.2			
	14MM		119565	0.3	5 x 2.3MM	5 x 3.0MM	5 x 5MM
	16MM		119566	0.3			
	18MM		119575	0.3			
19MM		119569	0.3	6 x 2.8MM	6 x 3.5MM	6 x 6MM	
20MM		119576	0.3				
22MM		119577	0.2				
24MM		119567	0.2	8 x 3.3MM	8 x 4MM	8 x 7	
1108	1/2"		119365	0.3	1/8 x 1/4	1/8 x 1/4	1/8 x 1/8
	9/16"		119366	0.3			
	5/8"	119367	117075	0.3			
	11/16"		119368	0.2			
	3/4"		117152	0.2	3/16 x 3/32	3/16 x 3/32	3/16 x 3/16
	13/16"		119370	0.2			
	7/8"	119371	117076	0.2			
	15/16"		119372	0.2	1/4 x 1/8	1/4 x 1/8	1/4 x 1/4
	1"		117153	0.2			
	1-1/16" #		119374	0.2	1/4 x 1/16	1/4 x 1/8	1/4 x 3/16 Δ
	1-1/8" #		117077	0.1			
	14MM		119651	0.3	5 x 2.3MM	5 x 3.0MM	5 x 5MM
16MM		119652	0.3				
18MM		119653	0.3				
19MM		119570	0.3	6 x 2.8MM	6 x 3.5MM	6 x 6MM	
20MM		119579	0.3				
22MM		119580	0.3				
24MM		119581	0.2	8 X 3.3MM	8 X 4MM	8 X 7MM	
25MM		119582	0.2				
1210	1/2"		119191	0.6	1/8 x 1/16	1/8 x 1/16	1/8 x 1/8
	9/16"		119192	0.6			
	5/8"		117078	0.6			
	11/16"		119194	0.5			
	3/4"	119195	117154	0.5	3/16 x 3/32	3/16 x 3/32	3/16 x 3/16
	13/16"		119196	0.5			
	7/8"	119197	117079	0.5			
	15/16"		119198	0.5			
	1"	119199	117155	0.5			
	1-1/16"		119200	0.4	1/4 x 1/8	1/4 x 1/8	1/4 x 1/4
	1-1/8"	119201	117080	0.4			
	1-3/16"		117156	0.4			
1-1/4"		117157	0.4				
14MM		119583	0.6	5 x 2.3MM	5 x 3.0MM	5 x 5MM	
16MM		119654	0.6				
18MM		119584	0.5				
19MM		119571	0.5	6 x 2.8MM	6 x 3.5MM	6 x 6MM	
20MM		119585	0.5				
22MM		119655	0.5				

TL Bush Size	BORE	P/N Integral Key	P/N Keyway	WT.	Bushing Keyway	Shaft Keyway REF	Key Size REF
1210 (cont)	24MM		119586	0.5			
	25MM		119587	0.4	8 X 3.3MM	8 X 4MM	8 X 7MM
	28MM		119588	0.4			
	30MM		119589	0.4	8 X 3.3MM	8 X 4MM	8 x 7
1215	1/2"		119001	0.9	1/8 x 1/16	1/8 x 1/16	1/8 x 1/8
	9/16"		119002	0.9			
	5/8"		119003	0.8			
	11/16"		119004	0.8			
	3/4"		119005	0.8	3/16 x 3/32	3/16 x 3/32	3/16 x 3/16
	13/16"		119006	0.8			
	7/8"		119007	0.8			
	15/16"		119008	0.8			
	1"		119009	0.7			
	1-1/16"		119010	0.6	1/4 x 1/8	1/4 x 1/8	1/4 x 1/4
	1-1/8"		119011	0.6			
	1-3/16"		119012	0.5			
1-1/4"		119013	0.5				
1310	1/2"		119390	0.7	1/8 x 1/16	1/8 x 1/16	1/8 x 1/8
	9/16"		119391	0.7			
	5/8"		119392	0.7			
	11/16"		119393	0.7			
	3/4"		119394	0.7	3/16 x 3/32	3/16 x 3/32	3/16 x 3/16
	13/16"		119395	0.7			
	7/8"		119396	0.7			
	15/16"		119397	0.6			
	1"		119398	0.6			
	1-1/16"		119399	0.6	1/4 x 1/8	1/4 x 1/8	1/4 x 1/4
	1-1/8"		119400	0.6			
	1-3/16"		119401	0.6			
1-1/4"		119402	0.6				
1-5/16" #		119403	0.6	5/16 x 5/32	5/16 x 5/32	5/16 x 5/16	
1-3/8" #		119404	0.6				
1-7/16" +		119438	0.6	3/8 x 1/8	3/8 x 3/16	3/8 x 5/16 Δ	
14MM		119656	0.7	5 x 2.3MM	5 x 3.0MM	5 x 5MM	
16MM		119657	0.7				
18MM		119658	0.7				
19MM		119572	0.7	6 x 2.8MM	6 x 3.5MM	6 x 6MM	
20MM		119659	0.6				
22MM		119660	0.6				
24MM		119591	0.6				
25MM		119592	0.5	8 X 3.3MM	8 X 4MM	8 X 7MM	
28MM		119593	0.5				
30MM		119594	0.5				
32MM		119595	0.4	10 X 3.3MM	10 X 5MM	10 X 8MM	
35MM		119596	0.4				
1610	1/2"		119211	0.9	1/8 x 1/16	1/8 x 1/16	1/8 x 1/8
	9/16"		119212	0.9			
	5/8"		117081	0.9			
	11/16"		119214	0.9			
	3/4"	119215	117158	0.9	3/16 x 3/32	3/16 x 3/32	3/16 x 3/16
	13/16"		119216	0.9			
	7/8"	119217	117082	0.8			
	15/16"		117083	0.8			
	1"	119219	117159	0.8			
	1-1/16"		119220	0.8	1/4 x 1/8	1/4 x 1/8	1/4 x 1/4
	1-1/8"	119221	117084	0.7			
	1-3/16"		117160	0.7			
1-1/4"	119223	117161	0.7				

Δ Key furnished for these sizes only.

+ These sizes are steel.

Refer to torque capacity rating on page PT6-3. If Service Factor of 2.0 or greater is required, consult DODGE.

TL STOCK SIZES PAGE PT6-5	OD METRIC BORES PAGE PT6-22	OD HUBS PAGE PT6-25	T-L HUBS PAGE PT6-12
------------------------------	--------------------------------	------------------------	-------------------------



SPECIFICATION



TAPER-LOCK Bushings - Stock Bore

TL Bush Size	BORE	P/N Integral Key	P/N Keyway	WT.	Bushing Keyway	Shaft Keyway REF	Key Size REF			
1610 (cont)	1-5/16"	119225	119224	0.6	5/16 x 5/32	5/16 x 5/32	5/16 x 5/16			
	1-3/8"		117085	0.6						
	1-7/16"		117162	0.6						
	1-1/2"	119227	117163	0.5	3/8 x 3/16	3/8 x 3/16	3/8 x 3/8			
	1-9/16" #	119229	119228	0.5	3/8 x 1/8	3/8 x 3/16	3/8 x 5/16 Δ			
	1-5/8" #		117086	0.5						
	1-11/16"+		117071	0.5						
	14MM	119661	119661	0.9	5 x 2.3MM	5 x 3.0MM	5 x 5MM			
	16MM		119662	0.9						
	18MM		119663	0.9						
	19MM		119573	0.8						
	20MM		119598	0.8						
	22MM		119236	0.8						
	24MM		119599	0.8						
25MM	119600		0.7							
28MM	119601		0.7							
30MM	119602		0.7							
32MM	119603	119603	0.6	6 x 2.8MM	6 x 3.5MM	6 x 6MM				
35MM		119604	0.6							
38MM		119605	0.5							
40MM		119606	0.5							
12 X 3.3MM		119604	1.3				1/8 x 1/16	1/8 x 1/16	1/8 x 1/8	
9/16"		119041	1.3							
5/8"		119042	119042				1.3	3/16 x 3/32	3/16 x 3/32	3/16 x 3/16
11/16"			119043				1.2			
3/4"	119044		1.2							
13/16"	119045		1.2							
7/8"	119046		1.1							
15/16"	119047		1.1							
1"	119048		1.1							
1-1/16"	119049	119049	1.0	1/4 x 1/8	1/4 x 1/8	1/4 x 1/4				
1-1/8"		119050	1.0							
1-3/16"		119051	1.0							
1-1/4"		119052	0.9							
1-5/16"	119053	119053	0.8	5/16 x 5/32	5/16 x 5/32	5/16 x 5/16				
1-3/8"		119054	0.8							
1-7/16"		119055	0.7							
1-1/2"		119056	0.7							
1-9/16" #		119057	0.7							
1-5/8" #		119058	0.6							
1-11/16"+		119068	0.6							
1/2"		119241	119241				1.7	1/8 x 1/16	1/8 x 1/16	1/8 x 1/8
9/16"			119242				1.7			
5/8"			117087				1.7			
11/16"			119244				1.7			
3/4"			117088				1.7			
13/16"			119246				1.7			
7/8"			117089				1.7			
15/16"	119249	119248	1.6	1/4 x 1/8	1/4 x 1/8	1/4 x 1/4				
1"		117164	1.6							
1-1/16"		119250	1.6							
1-1/8"		117090	1.5							
1-3/16"		117165	1.5							
1-1/4"		119253	1.4							

Δ Key furnished for these sizes only.

+ These sizes are steel.

Refer to torque capacity rating on page PT6-3. If Service Factor of 2.0 or greater is required, consult DODGE.

TL Bush Size	BORE	P/N Integral Key	P/N Keyway	WT.	Bushing Keyway	Shaft Keyway REF	Key Size REF			
2012 (cont)	1-5/16"	119254	119254	1.3	5/16 x 5/32	5/16 x 5/32	5/16 x 5/16			
	1-3/8"		117091	1.2						
	1-7/16"	119256	117167	1.2						
	1-1/2"		117168	1.2						
	1-9/16"	119257	119258	1.2						
	1-5/8"		117092	1.2						
	1-11/16"	119093	117093	1.1						
	1-3/4"		117094	1.0						
	1-13/16"	119262	119262	1.0				1/2 x 1/4	1/2 x 1/4	1/2 x 1/2
	1-7/8"		117095	0.9						
	1-15/16" #	117169	117169	0.9				1/2 x 3/16	1/2 x 1/4	1/2 x 7/16 Δ
	2"		117170	0.9						
	2-1/8" +		117177	0.9						
	14MM	119664	119664	1.7				5 x 2.3MM	5 x 3.0MM	5 x 5MM
16MM	119665		1.7							
18MM	119666	119666	1.6	6 x 2.8MM	6 x 3.5MM	6 x 6MM				
19MM		119574	1.6							
20MM		119607	1.6							
22MM		119667	1.6							
24MM	119608	119608	1.5	8 X 3.3MM	8 X 4MM	8 X 7MM				
25MM		119609	1.5							
28MM	119610	119610	1.5	10 X 3.3MM	10 X 5MM	10 X 8MM				
30MM		119611	1.4							
32MM		119612	1.4							
35MM	119613	119613	1.3	12 X 3.3MM	12 X 5MM	12 X 8MM				
38MM		119614	1.3							
40MM	119615	119615	1.2	14 X 3.8MM	14 X 5.5MM	14 X 9MM				
42MM		119616	1.1							
45MM	119617	119617	1.0	1/8 x 1/16	1/8 x 1/16	1/8 x 1/8				
48MM		119668	0.9							
1/2"	119100	119100	3.7	3/16 x 3/32	3/16 x 3/32	3/16 x 3/16				
5/8"		119102	3.6							
11/16"		119103	3.5							
3/4"		119104	3.4							
13/16"		119105	3.4							
7/8"		119106	3.3							
15/16"		119107	119107				3.3	1/4 x 1/8	1/4 x 1/8	1/4 x 1/4
1"	119108		3.3							
1-1/16"	119109	119109	3.2	5/16 x 5/32	5/16 x 5/32	5/16 x 5/16				
1-1/8"		119110	3.2							
1-3/16"		119111	3.2							
1-1/4"		119112	3.2							
1-5/16"	119113	119113	3.1	3/8 x 3/16	3/8 x 3/16	3/8 x 3/8				
1-3/8"		119114	3.1							
1-7/16"	119115	119115	3.0	1/2 x 1/4	1/2 x 1/4	1/2 x 1/2				
1-1/2"		119116	2.9							
1-9/16"		119117	2.9							
1-5/8"		119118	2.8							
1-11/16"		119119	2.8							
1-3/4"		119120	2.7							
1-13/16"		119121	119121				2.6			
1-7/8"	119122		2.5							
1-15/16"	119123	117173	2.4	1/2 x 1/4	1/2 x 1/4	1/2 x 1/2				
2"		117174	2.3							
2-1/16"		119125	2.3							
2-1/8"		117096	2.2							
2-3/16"		117175	2.1							
2-1/4"		117097	2.0							

TL STOCK SIZES PAGE PT6-5	OD METRIC BORES PAGE PT6-22	OD HUBS PAGE PT6-25	T-L HUBS PAGE PT6-12
------------------------------	--------------------------------	------------------------	-------------------------



TAPER-LOCK Bushings - Stock Bore

TL Bush Size	BORE	P/N Integral Key	P/N Keyway	WT.	Bushing Keyway	Shaft Keyway REF	Key Size REF
2517 (cont)	2-5/16"		119129	1.9	5/8 x 3/16	5/8 x 5/16	5/8 x 1/2 Δ
	2-3/8"		117098	1.9			
	2-7/16" #		117176	1.8			
	2-1/2" #		117099	1.8			
	2-5/8" +		117111	1.8			
	2-11/16"+		117115	1.8			
	14MM		119669	3.6	5 x 2.3MM	5 x 3.0MM	5 x 5MM
	16MM		119670	3.6			
	18MM		119671	3.5			
	19MM		119672	3.4			
	20MM		119618	3.4			
	22MM	119619	3.3	6 x 2.8MM	6 x 3.5MM	6 x 6MM	
	24MM	119620	3.3				
	25MM	119621	3.2				
	28MM	119622	3.1				
	30MM	119623	3.1				
	32MM		119624	3	10 X 3.3MM	10 X 5MM	10 X 8MM
	35MM		119625	2.9			
	38MM		119626	2.9			
	40MM		119627	2.8			
42MM	119628	2.6	12 X 3.3MM	12 X 5MM	12 X 8MM		
45MM	119629	2.5					
48MM	119630	2.4					
50MM	119640	2.3					
55MM	119641	2.0	16 X 4.3MM	16 X 6MM	16 X 10MM		
60MM	119642	1.7					
65MM	119643	1.4					

TL Bush Size	BORE	P/N Keyway	WT.	Bushing Keyway	Shaft Keyway REF	Key Size REF
3020	7/8	117103	6.5	3/16 x 3/32	3/16 x 3/32	3/16 x 3/16
	15/16	117101	6.5	1/4 x 1/8	1/4 x 1/8	1/4 x 1/4
	1	117102	6.5			
	1-1/8	117104	6.4			
	1-3/16	117105	6.4			
	1-1/4	117106	6.3	5/16 x 5/32	5/16 x 5/32	5/16 x 5/16
	1-5/16	117107	6.1			
	1-3/8	117108	6.0			
	1-7/16	117109	6.0			
	1-1/2	117110	5.9	3/8 x 3/16	3/8 x 3/16	3/8 x 3/8
	1-9/16	117135	5.9			
	1-5/8	117112	5.9			
	1-11/16	117113	5.7			
	1-3/4	117114	5.6	1-13/16	1-13/16	1-13/16
	1-13/16	117136	5.5			
	1-7/8	117116	5.4			
	1-15/16	117117	5.3			
	2	117118	5.2	1/2 x 1/4	1/2 x 1/4	1/2 x 1/2
	2-1/16	117119	5.0			
	2-1/8	117120	5.0			
	2-3/16	117121	4.9			
	2-1/4	117122	4.8	2-5/16	2-5/16	2-5/16
	2-5/16	117137	4.6			
	2-3/8	117124	4.5			
	2-7/16	117125	4.4			
	2-1/2	117126	4.3	5/8 x 5/16	5/8 x 5/16	5/8 x 5/8
	2-5/8	117128	4.0			
	2-11/16	117129	3.9			
	2-3/4	117130	3.7			
	2-13/16	117139	3.7	3/4 x 1/8	3/4 x 3/8	3/4 x 1/2 Δ
	2-7/8	117132	3.6			
	2-15/16"#	117133	3.6			
	3" #	117134	3.4			
	3-1/8" +	117178	3.3	3/4 x 1/4	3/4 x 3/8	3/4 x 5/8 Δ
	3-3/16" +	117179	3.3			
	3-1/4" +	117180	3.3			
	24MM	119673	6.5			
	25MM	119674	6.5			
	28MM	119675	6.4			
	30MM	119676	6.4			
32MM	119677	6.3	10 X 3.3MM	10 X 5MM	10 X 8MM	
35MM	119678	6.0				
38MM	119679	5.9				
40MM	119680	5.9				
42MM	119681	5.8	12 X 3.3MM	12 X 5MM	12 X 8MM	
45MM	119682	5.6				
48MM	119644	5.5				
50MM	119645	5.2				
55MM	119646	5.0	16 X 4.3MM	16 X 6MM	16 X 10MM	
60MM	119647	4.9				
65MM	119648	4.3				
70MM	119649	3.7				
75MM	119650	3.5	20 X 4.9MM	20 X 7.5MM	20 X 12MM	

TL Bush Size	BORE	P/N Keyway	WT.	Bushing Keyway	Shaft Keyway REF	Key Size REF
2525	3/4	119304	4.9	3/16 x 3/32	3/16 x 3/32	3/16 x 3/16
	7/8	119306	4.8			
	15/16	119307	4.8	1/4 x 1/8	1/4 x 1/8	1/4 x 1/4
	1	119308	4.8			
	1-1/8	119310	4.6			
	1-3/16	119311	4.5			
	1-1/4	119312	4.4	5/16 x 5/32	5/16 x 5/32	5/16 x 5/16
	1-3/8	119314	4.2			
	1-7/16	119315	4.2			
	1-1/2	119316	4.0			
	1-5/8	119318	3.8	3/8 x 3/16	3/8 x 3/16	3/8 x 3/8
	1-11/16	119319	3.8			
	1-3/4	119320	3.7			
	1-13/16	119321	3.2			
	1-7/8	119322	3.4	1/2 x 1/4	1/2 x 1/4	1/2 x 1/2
	1-15/16	119323	3.2			
	2	119324	3.1			
	2-1/8	119326	2.9			
	2-3/16	119327	2.5	5/8 x 3/16	5/8 x 5/16	5/8 x 1/2 Δ
	2-1/4	119328	2.3			
2-5/16	119329	2.0				
2-3/8	119330	2.0				
2-7/16	119331	2.0				
2-1/2	119332	2.0				

Δ Key furnished for these sizes only.

+ These sizes are steel.

Refer to torque capacity rating on page PT6-3. If Service Factor of 2.0 or greater is required, consult DODGE.

TL STOCK SIZES PAGE PT6-5	OD METRIC BORES PAGE PT6-22	OD HUBS PAGE PT6-25	T-L HUBS PAGE PT6-12
------------------------------	--------------------------------	------------------------	-------------------------



SPECIFICATION



TAPER-LOCK Bushings - Stock Bore

TL Bush Size	BORE	P/N Keyway	WT.	Bushing Keyway	Shaft Keyway REF	Key Size REF		
3030	15/16	117004	10.0	1/4 x 1/8	1/4 x 1/8	1/4 x 1/4		
	1	117005	9.4					
	1-1/8	117007	9.4					
	1-3/16	117008	9.2	5/16 x 5/32	5/16 x 5/32	5/16 x 5/16		
	1-1/4	117009	9.0					
	1-5/16	117010	8.9					
	1-3/8	117011	8.8	3/8 x 3/16	3/8 x 3/16	3/8 x 3/8		
	1-7/16	117012	8.6					
	1-1/2	117013	8.5					
	1-9/16	117014	8.4					
	1-5/8	117015	8.2					
	1-11/16	117016	8.0					
	1-3/4	117017	7.8	1/2 x 1/4	1/2 x 1/4	1/2 x 1/2		
	1-13/16	117018	7.6					
	1-7/8	117019	7.5					
	1-15/16	117020	7.4					
	2	117021	7.3					
	2-1/16	117022	7.2					
	2-1/8	117023	7.1	5/8 x 5/16	5/8 x 5/16	5/8 x 5/8		
	2-3/16	117024	6.9					
	2-1/4	117025	6.7					
	2-5/16	117026	6.6					
	2-3/8	117027	6.4					
	2-7/16	117028	6.2					
	2-1/2	117029	6.1	3/4 x 1/8	3/4 x 3/8	3/4 x 1/2 Δ		
	2-5/8	117031	6.0					
	2-11/16	117032	5.9					
	2-3/4	117033	5.6					
	2-7/8	117035	5.3					
	2-15/16#	117036	5.0					
3" #	117037	4.9	3/4 x 1/4	3/4 x 3/8	3/4 x 5/8 Δ			
3-1/8" +	117181	4.7						
3-3/16" +	117182	4.7						
3-1/4" +	117183	4.7	8 X 3.3MM	8 X 4MM	8 X 7MM			
28MM	119808	9.4						
32MM	119809	9.0						
38MM	119810	8.4	14 X 3.8MM	14 X 5.5MM	14 X 9MM			
48MM	119811	7.6						
55MM	119812	6.9						
60MM	119813	6.4	16 X 4.3MM	16 X 6MM	16 X 10MM			
1-3/16	117207	15.2				1/4 x 1/8	1/4 x 1/8	1/4 x 1/4
1-1/4	117208	14.9						
1-3/8	117209	14.8						
1-7/16	117210	14.6	5/16 x 5/32	5/16 x 5/32	5/16 x 5/16			
1-1/2	117211	14.4						
1-5/8	117212	14.1						
1-11/16	117213	14.0	3/8 x 3/16	3/8 x 3/16	3/8 x 3/8			
1-3/4	117214	14.0						
1-7/8	117215	13.6						
1-15/16	117216	13.4	1/2 x 1/4	1/2 x 1/4	1/2 x 1/2			
2	117217	13.1						
2-1/16	117218	12.8						
2-1/8	117219	12.6	1/2 x 1/4	1/2 x 1/4	1/2 x 1/2			
2-3/16	117220	12.4						
2-1/4	117237	12.2						

Δ Key furnished for these sizes only.

+ These sizes are steel.

Refer to torque capacity rating on page PT6-3. If Service Factor of 2.0 or greater is required, consult DODGE.

TL Bush Size	BORE	P/N Keyway	WT.	Bushing Keyway	Shaft Keyway REF	Key Size REF			
3535 (cont)	2-5/16	117221	12.0	5/8 x 5/16	5/8 x 5/16	5/8 x 5/8			
	2-3/8	117222	11.7						
	2-7/16	117223	11.7						
	2-1/2	117224	11.0						
	2-5/8	117225	10.9						
	2-11/16	117226	10.7						
	2-3/4	117227	10.0	3/4 x 3/8	3/4 x 3/8	3/4 x 3/4			
	2-7/8	117228	9.8						
	2-15/16	117229	9.7						
	3	117230	9.2						
	3-1/8	117231	9.2						
	3-3/16	117232	8.8						
	3-1/4	117236	8.7	7/8 x 1/8	7/8 x 7/16	7/8 x 9/16 Δ			
	3-5/16	117236	8.6						
	3-3/8	117233	8.7						
	3-7/16	117234	8.3						
	3-1/2	117235	8.0						
	3-5/8" #	117707	7.1						
	3-11/16" #	117708	6.8	7/8 x 1/4	7/8 x 7/16	7/8 x 11/16 Δ			
	3-3/4" #	117709	6.4						
	3-7/8" #	117710	6.0						
	3-15/16" #	117703	5.6						
	32MM	119814	14.6				1 x 1/4	1 x 1/2	1 x 3/4 Δ
	38MM	119815	14.0						
	48MM	119816	13.2						
	55MM	119817	11.1						
	60MM	119683	11.1						
	80MM	117297	10.0						
	90MM	426013	10.0	10 X 3.3MM	10 X 5MM	10 X 8MM			
	1-7/16	117310	24.0						
1-1/2	117311	22.0	7/8 x 3/16				7/8 x 7/16	7/8 x 5/8 Δ	
1-5/8	117312	22.0							
1-11/16	117313	21.9							
1-3/4	117314	21.9							
1-7/8	117315	21.0							
1-15/16	117316	21.2							
2	117317	21.1	1/2 x 1/4	1/2 x 1/4	1/2 x 1/2				
2-1/8	117318	20.6							
2-3/16	117319	20.3							
2-1/4	117320	20.2							
2-3/8	117321	19.6							
2-7/16	117322	19.3							
2-1/2	117323	18.8	5/8 x 5/16	5/8 x 5/16	5/8 x 5/8				
2-5/8	117324	18.7							
2-11/16	117325	18.3							
2-3/4	117326	18.2							
2-7/8	117327	17.5							
2-15/16	117328	17.2							
3	117329	16.8	3/4 x 3/8	3/4 x 3/8	3/4 x 3/4				
3-1/8	117330	16.2							
3-3/16	117331	15.8							
3-1/4	117332	15.5							
3-3/8	117333	14.8							
3-7/16	117334	14.4							
3-1/2	117335	14.0	7/8 x 7/16	7/8 x 7/16	7/8 x 7/8				
3-5/8	117337	13.5							
3-11/16	117340	13.5							
3-3/4	117336	13.5							
3-11/16	117340	13.5							
3-3/4	117336	13.5							

TL STOCK SIZES PAGE PT6-5	OD METRIC BORES PAGE PT6-22	OD HUBS PAGE PT6-25	T-L HUBS PAGE PT6-12
------------------------------	--------------------------------	------------------------	-------------------------



TAPER-LOCK Bushings - Stock Bore

TL Bush Size	BORE	P/N Keyway	WT.	Bushing Keyway	Shaft Keyway REF	Key Size REF			
4040 (cont)	3-7/8	117341	12.9	1 x 1/4	1 x 1/2	1 x 3/4 Δ			
	3-15/16	117338	12.5						
	4	117352	12.0						
	4-1/8" #	117714	11.2						
	4-3/16" #	117715	10.7						
	4-1/4" #	117716	10.3						
	4-3/8" #	117717	9.5						
	4-7/16" #	117704	8.9						
	48MM	119818	21.0				14 X 3.8MM	14 X 5.5MM	14 X 9MM
	55MM	119819	20.4				16 X 4.3MM	16 X 6MM	16 X 10MM
60MM	119820	19.5	18 X 4.4MM	18 X 7MM	18 X 11MM				
4545	1-15/16	117416	29.9	1/2 x 1/4	1/2 x 1/4	1/2 x 1/2			
	2	117417	29.8						
	2-3/16	117419	29.0						
	2-3/8	117421	28.2	5/8 x 5/16	5/8 x 5/16	5/8 x 5/8			
	2-7/16	117422	27.9						
	2-5/8	117424	27.0						
	2-3/4	117426	26.5						
	2-7/8	117427	25.7						
	2-15/16	117428	25.3	3/4 x 3/8	3/4 x 3/8	3/4 x 3/4			
	3	117429	25.2						
	3-1/8	117430	24.3						
	3-3/16	117431	24.2						
	3-1/4	117432	23.9						
	3-3/8	117433	22.8	7/8 x 7/16	7/8 x 7/16	7/8 x 7/8			
	3-7/16	117434	22.6						
	3-1/2	117435	22.1						
	3-5/8	117413	21.2						
	3-3/4	117436	20.3						
	3-7/8	117437	19.5	1 x 1/2	1 x 1/2	1 x 1			
	3-15/16	117438	19.0						
4	117439	18.6							
4-1/8	117444	17.5							
4-3/16	117443	17.1							
4-1/4	117441	17.0	1 x 1/4	1 x 1/2	1 x 3/4 Δ				
4-3/8	117442	16.9							
4-7/16	117440	16.5							
4-1/2	117447	15.9							
4-3/4" #	117718	13.9				1-1/4 x 1/4	1-1/4 x 5/8	1-1/4 x 7/8 Δ	
4-7/8" #	117719	12.9							
4-15/16" #	117705	12.5							

Δ Key furnished for these sizes only.

+ These sizes are steel.

Refer to torque capacity rating on page PT6-3. If Service Factor of 2.0 or greater is required, consult DODGE.

TL Bush Size	BORE	P/N Keyway	WT.	Bushing Keyway	Shaft Keyway REF	Key Size REF			
5050	2-7/16	117458	39.0	5/8 x 5/16	5/8 x 5/16	5/8 x 5/8			
	2-11/16	117450	37.4						
	2-15/16	117459	36.0				3/4 x 3/8	3/4 x 3/8	3/4 x 3/4
	3-3/8	117452	33.0				7/8 x 7/16	7/8 x 7/16	7/8 x 7/8
	3-7/16	117460	32.6						
	3-5/8	117453	31.2						
	3-7/8	117454	29.3				1 x 1/2	1 x 1/2	1 x 1
	3-15/16	117461	28.6						
	4	117466	28.3						
	4-1/4	117465	26.2						
4-3/8	117469	25.0							
4-7/16	117462	24.4							
4-1/2	117467	23.9							
4-7/8	117468	22.3	1-1/4 x 1/4	1-1/4 x 5/8	1-1/4 x 7/8 Δ				
4-15/16	117463	21.4							
5	117464	20.9							
6050	4-7/16	117474	63.6	1 x 1/2	1 x 1/2	1 x 1			
	4-15/16	117473	58.2	1-1/4 x 5/8	1-1/4 x 5/8	1-1/4 x 1-1/4			
	5-7/16	117475	52.3						
	5-15/16	117476	57.2	1-1/2 x 3/4	1-1/2 x 3/4	1-1/2 x 1-1/2			
	6	117477	46.4						
7060	4-15/16	117490	92.0	1-1/4 x 5/8	1-1/4 x 5/8	1-1/4 x 1-1/4			
	5-7/16	117491	84.5						
	5-15/16	117492	78.2						
	6	117493	76.6						
	6-7/16	117494	68.1						
6-1/2	117495	68.7	1-1/2 x 3/4	1-1/2 x 3/4	1-1/2 x 1-1/2				
6-15/16	117496	62.1							
7" #	117497	60.6							
8065	5-7/16	117479	98.6	1-1/4 x 5/8	1-1/4 x 5/8	1-1/4 x 1-1/4			
	5-15/16	117480	105.7	1-1/2 x 3/4	1-1/2 x 3/4	1-1/2 x 1-1/2			
	6-7/16	117481	102.3						
	6-1/2	117482	101.8						
	6-15/16	117488	92.0	1-3/4 x 3/4	1-3/4 x 3/4	1-3/4 x 1-1/2			
	7	117483	91.1						
	7-1/2	117503	89.9						
8 #	117484	89.9	2 x 3/4	2 x 3/4	2 x 1-1/2				
10085	7	117486	245.0	1-3/4 x 3/4	1-3/4 x 3/4	1-3/4 x 1-1/2			
	8	117485	219.0	2 x 3/4	2 x 3/4	2 x 1-1/2			
	9	117487	190.0						
	10	117510	157.5	2-1/2 x 7/8	2-1/2 x 7/8	2-1/2 x 1-3/4			
120100	8	117522	410.0	2-1/2 x 7/8	2-1/2 x 7/8	2-1/2 x 1-3/4			
	8-1/2	117523	395.0						
	9	117520	380.0						
	9-1/2	117524	365.0						
	10	117521	350.0						
	10-1/2	117525	335.0						
	11	117526	320.0						
11-1/2	117527	305.0	3 x 1	3 x 1	3 x 2				
12" #	117508	290.0							

TL STOCK SIZES PAGE PT6-5	OD METRIC BORES PAGE PT6-22	OD HUBS PAGE PT6-25	T-L HUBS PAGE PT6-12
------------------------------	--------------------------------	------------------------	-------------------------



SPECIFICATION



TAPER-LOCK Bushings - Reborable



TL Bush Size	Sintered Steel Bore	P/N	Cast Iron Bore	P/N	Ductile Iron Bore	P/N	Steel Bore	P/N	Stainless Steel Bore	P/N
1008	1/2"	119187					1/2"	119432	1/2"	119410
1108	1/2"	119361					1/2"	119433	1/2"	119411
1210	1/2"	119206					1/2"	119434	1/2"	119412
1215	1/2"	119023					1/2"	119435	1/2"	119413
1310	1/2"	119386					1/2"	119436	1/2"	119414
1610	1/2"	119209					1/2"	119421	1/2"	119415
1615	1/2"	119067					1/2"	119437	1/2"	119416
2012	1/2"	119272					1/2"	119422	1/2"	119417
2517	1/2"	119141					1"	119423	5/8"	119418
2525							1-7/16"	119429		
3020	7/8"	117147					1-7/16"	119430	7/8"	119419
3020	1-11/16"	117149								
3030			15/16"	117045	1-7/16"	117205	1-7/16"	119431		
3535			1-3/16"	117250	1-15/16"	117307				
4040			1-7/16"	117345	2-7/16"	117414				
4545			1-15/16"	117448	2-15/16"	117455				
5050			2-7/16"	117451						
6050			3-7/16"	117472						
7060			3-15/16"	117498						
8065			4-7/16"	117502						
10085			7"	117489						
120100			8"	117504						

NOTE: All reborable bushings are stocked without sawsplit to facilitate re-machining. Sawsplit must be made in bushing to allow it to compress for proper gripping of the shaft. Factory rebore and keyseat service as listed in MLP price book includes sawsplit

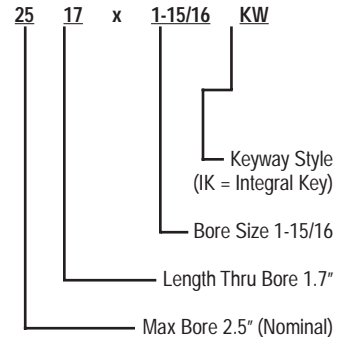
TAPER-LOCK BUSHING MAXIMUM BORE CAPACITIES (INCHES)

TL Bush Size	Sintered Steel			Cast Iron			Ductile Iron			Steel		
	Full Key	Shallow Key	No * Key	Full Key	Shallow Key	No * Key	Full Key	Shallow Key	No * Key	Full Key	Shallow Key	No * Key
1008	7/8"	1"	1"							7/8"	1"	1"
1108	1"	1-1/8"	1-1/8"							1"	1-1/8"	1-1/8"
1210	1-1/4"	1-1/4"	1-1/4"							1-1/4"	1-1/4"	1-1/4"
1215	1-1/4"	1-1/4"	1-1/4"							1-1/4"	1-1/4"	1-1/4"
1310	1-3/8"	1-3/8"	1-3/8"							1-3/8"	1-7/16"	1-7/16"
1610	1-1/2"	1-5/8"	1-5/8"							1-5/8"	1-11/16"	1-11/16"
1615	1-1/2"	1-5/8"	1-5/8"							1-5/8"	1-11/16"	1-11/16"
2012	1-7/8"	2"	2"							2"	2-1/8"	2-1/8"
2517	2-1/4"	2-1/2"	2-1/2"							2-7/16"	2-11/16"	2-11/16"
2525				2-1/4"	2-1/2"	2-1/2"				2-3/8"	2-11/16"	2-11/16"
3020	2-3/4"	3"	3"	2-3/4"	3"	3"				3"	3-1/4"	3-1/4"
3030				2-3/4"	3"	3"				3"	3-1/4"	3-1/4"
3535				3-1/4"	3-1/2"	3-1/2"	3-1/2"	3-15/16"	3-15/16"			
4040				3-5/8"	4"	4"	4"	4-7/16"	4-7/16"			
4545				4-1/2"	4-1/2"	4-1/2"	4-1/2"	4-15/16"	4-15/16"			
5050				4-1/2"	5"	5"	5"	5-5/16"	5-5/16"			
6050				6"	6"	6"	6"	6"	6"			
7060				7"	7"	7"	7"	7"	7"			
8065				8"	8"	8"	8"	8"	8"			
10085				10"	10"	10"	10"	10"	10"			
120100				12"	12"	12"	12"	12"	12"			

* Verify torque capability. Contact Application Engineering for assistance.

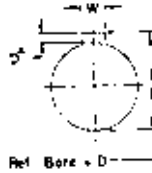
Example Nomenclature

TAPER-LOCK Bushing





TAPER-LOCK Bushings - Metric Bore



ISO STANDARD METHOD FOR MEASURING KEYSEAT DEPTH.

▲ Depth measured at centerline

Reference:

1 inch = 25.4 millimeters

1 millimeter = .03937 inches

METRIC BORE CAPACITIES-TAPER-LOCK BUSHINGS

TL Bush Size	Min Bore	Sintered Steel		Cast Iron		Ductile Iron		Steel		TL Bush Size	Min Bore	Sintered Steel		Cast Iron		Ductile Iron		Steel	
		Full Key	No * Key	Full Key	No * Key	Full Key	No * Key	Full Key	No * Key			Full Key	No * Key	Full Key	No * Key	Full Key	No * Key	Full Key	No * Key
1008	13	22	25					22	26	3030	24			75	76			80	82
1108	13	25	29					25	29	3535	31			83	89	91	100		
1210	13	32	32					32	32	4040	37			95	102	100	113		
1215	13	32	32					32	32	4545	50			110	114	115	125		
1310	13	35	35					35	36	5050	61			120	127	127	134		
1610	13	39	40					42	44	6050	88			152	152	152	152		
1615	13	39	40					42	44	7060	100			177	177	177	177		
2012	13	50	51					50	55	8065	117			203	203	203	203		
2517	13	60	64					65	68	10085	178			254	254	254	254		
2525	20			57	64			65	68	120100	204			304	304	304	304		
3020	24	75	76					80	82										

NOTE: ISO STANDARD METHOD FOR MEASURING KEYSEAT DEPTH
MM Bore and Keyway dimensions conform to ISO standard recommendation R773, for "Free" fit

* Verify torque capability. Contact Application Engineering for assistance.

REFERENCE:

1 inch = 25.4 millimeters

1 millimeter = .03937 inches



SPECIFICATION



TAPER-LOCK Weld-On Hubs



Type W/WA



Type K

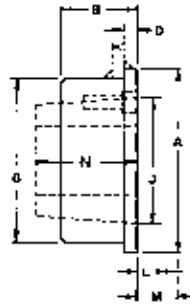
DODGE Weld-On hubs are made of 1015-1025 steel, drilled, tapped, and taper bored to receive TAPER-LOCK bushings. They are useful for welding into fan rotors, pulleys, plate sprockets, impellers, agitators, etc. which must be firmly mounted onto shafting. Four types of hubs are available from stock:

TYPE W/WA: Rugged, full length size for single-hub heavy-duty applications.

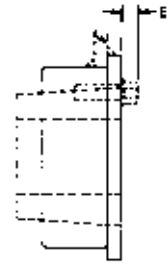
TYPE K: More compact design, especially useful for two-hub construction such as conveyor pulleys.

TYPE S: Originally designed for use in smaller sprockets using up to Taper-Lock size 3535 bushings. Suitable for many other lighter-duty applications.

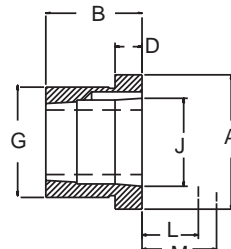
TYPE F: Features a larger flange diameter that can be welded into standard steel tubing to fabricate conveyor pulleys or process rolls.



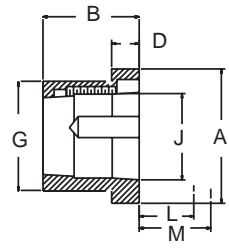
K25 to K50



K60 to K120



W12 to WA30



WA35 to WA100

TAPER-LOCK TYPE K AND TYPE W/WA WELD-ON HUBS

Hub No.	Part No.	Uses Bush.	Max. Bore	Wt. lbs.	Dimensions									Tolerances		
					A	B+	D	E	G	J Ref.	L++	M**	N	G Dimension		
W12	228010	1215	1-1/4	1.2	2.88	1.50	0.63	...	2.500*	1.88	1.38	1.63	1.50	*	+.000/-0.002	
W16	228011	1615	1-11/16	1.3	3.25	1.50	0.63	...	2.875*	2.25	1.38	1.63	1.50	@	+.000/-0.003	
W25	228012	2517	2-11/16	3.9	4.88	1.75	0.75	...	4.375*	3.38	1.63	2.25	1.75	~	+.000/-0.004	
WA30	228087	3030	3-1/4	8.6	5.50	3.00	0.75	...	5.125*	4.25	1.81	2.69	3.00			
WA35	228088	3535	3-15/16	15	6.75	3.50	1.00	...	6.250*	5.00	2.00	3.33	3.50			
WA40	228089	4040	4-7/16	29	7.75	4.00	1.00	...	7.250*	5.75	2.38	4.13	4.00			
WA45	228090	4545	4-15/16	42	8.75	4.50	1.00	...	8.000*	6.38	2.63	4.75	4.50	+	+.001/-0.125	
WA50	228091	5050	5	57	9.50	5.00	1.00	...	8.750@	7.00	2.19	5.25	5.00			
WA60	228092	6050	6	115	13.25	5.00	1.25	1.44	12.250~	9.25	1.63	4.33	5.00			
WA70	228093	7060	7	158	14.5	6.00	1.25	1.44	13.500~	10.25	1.63	4.33	6.00			
WA80	228094	8065	8	180	15.25	6.50	1.25	1.44	14.125~	11.25	1.63	4.33	6.50			
WA100	228095	10085	10	340	19.75	8.50	1.50	1.75	18.750~	14.75	2.00	5.33	8.50			
K25	207156	2517	2-11/16	3.6	4.88	1.50	0.38	...	4.375*	3.38	1.63	2.25	1.75			
K30	207157	3020	3-1/4	7.8	5.50	1.63	0.75	...	5.125*	4.25	1.81	2.69	2.00			
K35	228080	3535	3-15/16	9.8	6.75	1.63	0.75	...	6.250*	5.00	2.00	3.33	3.50			
K40	228081	4040	4-7/16	10.8	7.75	2.13	0.50	...	7.250*	5.75	2.63	4.13	4.00			
K45	228082	4545	4-15/16	15.2	8.50	2.63	0.63	...	8.000*	6.83	2.63	4.75	4.50			
K50	228083	5050	5	29	9.25	2.88	0.63	...	8.750@	7.00	2.81	5.25	5.00			
K60	228084	6050	6	44	12.75	2.88	0.63	1.44	12.250~	9.25	1.63	4.33	5.00			
K70	228085	7060	7	60	14.00	3.38	0.75	1.44	13.500~	10.25	1.63	4.33	6.00			
K80	228086	8065	8	65	14.75	3.63	0.75	1.44	14.125~	11.25	1.63	4.33	6.5			
K100	228079	10085	10	128	19.25	4.13	1.00	1.75	18.750~	14.75	2.00	5.33	8.50			
K120	228058	120100	12	225	22.25	5.38	1.00	1.75	21.750~	17.25	2.00	5.33	10.00			

++ Wrench clearance required to install bushing.

** Wrench clearance required to remove bushing.



TAPER-LOCK Weld-On Hubs

TYPE S WELD-ON HUBS

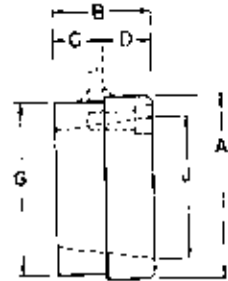
Hub No.	Part No.	Uses Bush.	Bore Range	Wt.	Dimensions						
					A	B	C	D	G	G Toler.	J Ref.
S16-4	097023	1610	1/2 to 1-11/16"	.90	3.00	1.00	0.275	.73	2.875	+0.000/-0.002	2.25
S16-6	097024	1610	1/2 to 1-11/16"	.90	3.00	1.00	0.45	.55	2.875	+0.000/-0.002	2.25
S20-6	097025	2012	1/2 to 2-1/8"	1.80	3.56	1.25	0.45	.80	3.438	+0.000/-0.002	2.75
S20-8	097015	2012	1/2 to 2-1/8"	1.40	3.56	1.25	0.57	.68	3.438	+0.000/-0.002	2.75
S25-6	097016	2517	1/2 to 2-11/16"	2.60	4.25	1.75	0.45	1.3	4.125	+0.000/-0.002	3.33
S25-8	097017	2517	1/2 to 2-11/16"	2.60	4.25	1.75	0.565	1.19	4.125	+0.000/-0.002	3.33
S25-10	097018	2517	1/2 to 2-11/16"	2.50	4.25	1.75	0.685	1.07	4.125	+0.000/-0.002	3.33
S25-16	097019	2517	1/2 to 2-11/16"	2.40	4.25	1.75	1.09	.66	4.125	+0.000/-0.002	3.33
S30-10	097020	3020	15/16 to 3-1/4"	4.30	5.25	2.00	0.675	1.33	5.125	+0.000/-0.002	4.25
S30-16	097021	3020	15/16 to 3-1/4"	4.20	5.25	2.00	1.09	.91	5.125	+0.000/-0.002	4.25
S35	097022	3535	1-3/16 to 3-15/16"	12.80	6.50	3.50	1.16	2.34	6.375	+0.000/-0.002	5.00

TAPER-LOCK TYPE F WELD-ON HUBS

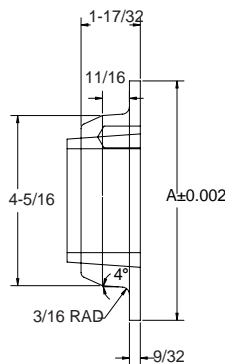
Hub No.	Part No.	Uses Bush.	Bore Range	Wt.	A
6F25P	226091	2517	1/2 to 2-11/16"	3.9	6.048
6F25A	226026	2517	1/2 to 2-11/16"	3.8	5.685
6F25B	226027	2517	1/2 to 2-11/16"	3.8	5.664
6F25C	226028	2517	1/2 to 2-11/16"	3.8	5.625
6F25D	226029	2517	1/2 to 2-11/16"	3.8	5.579
6F25E	226030	2517	1/2 to 2-11/16"	3.8	5.537
8F25P	226093	2517	1/2 to 2-11/16"	6.3	7.962
8F25A	226031	2517	1/2 to 2-11/16"	6.2	7.685
8F25B	226032	2517	1/2 to 2-11/16"	6.2	7.664
8F25C	226033	2517	1/2 to 2-11/16"	6.2	7.625
8F25D	226034	2517	1/2 to 2-11/16"	6.2	7.579
8F25E	226007	2517	1/2 to 2-11/16"	6.2	7.537
F30	226101	3020	15/16 to 3-1/4"	5.3	5.75



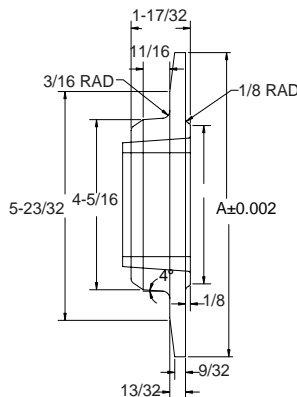
Type S



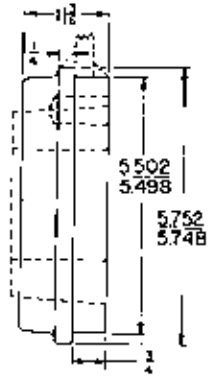
F30



6F25



8F25



F30

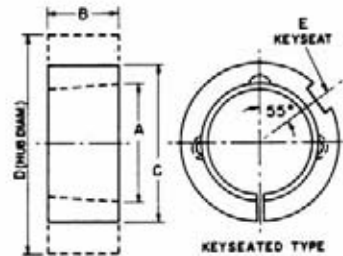
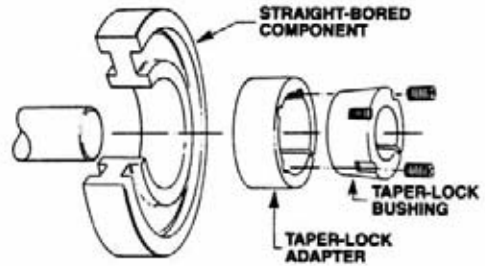
TL STOCK SIZES PAGE PT6-5	OD METRIC BORES PAGE PT6-22	OD HUBS PAGE PT6-25	T-L HUBS PAGE PT6-12
------------------------------	--------------------------------	------------------------	-------------------------



SPECIFICATION



TAPER-LOCK Adapters



Adapters for TAPER-LOCK bushings are recommended for use where it is more convenient to straight bore than to drill, tap and taper bore hubs to accommodate bushings.

The adapter is a gray iron, taper-bored sleeve which fits into the straight bore of a hub. The bushing simply fits inside the adapter which is tapped for the bushing screws. When tightening the locking screws, adapter is expanded against the hub bore contracting the bushing tightly upon the shaft. See page PT6-3 for bushing data and wrench space required.

TAPER-LOCK ADAPTERS

Adapter No.	Type	For Use With Bush. No.	Adapter Part No.	Adapter Wt.	A Ref.	B	C*	D: Req'd Hub Dia. †		E Keyseat
								Class 30 Gray Iron	Steel	
1215B	Keyseated	1215	120011	.7	1.88	1.50	2-3/8	3.38	3.25	1/4 x 1/8
1615B	Keyseated	1615	120012	.9	2.25	1.50	2-3/4	3.75	3.50	3/8 x 1/8
2517B	Keyseated	2517	120013	2.2	3.38	1.75	4-1/8	5.50	5.00	5/8 x 1/8
2525B	Keyseated	2525	120014	3.2	3.38	2.50	4-1/8	5.25	5.00	5/8 x 1/8
3030B	Keyseated	3030	120015	5.8	4.25	3.00	5-1/8	6.88	6.25	3/4 x 3/16
3535B	Keyseated	3535	120016	11.3	5.00	3.50	6-1/4	8.38	7.88	7/8 x 3/16
4040B	Keyseated	4040	120017	17.3	5.75	4.00	7-1/4	10.13	9.38	1 x 3/16
4545B	Keyseated	4545	120018	21.9	6.38	4.50	7-7/8	11.00	10.25	1 x 3/16

* .001 to +.003 tolerance recommended for bore of hub.

† For reference. Severe conditions may require larger hub. Heavy well located web may permit smaller hub. Hub diameter required depends on the application. Consult factory giving full information on the proposed

design. Hub diameters shown are based on 30,000 and 50,000 P.S.I. minimum ultimate tensile strength respectively for Class 30 gray iron and steel hubs.