

Booster Pumps

HB4 Series Horizontal Booster Pumps



Applications:

- Boosting water pressure from either city mains or private water systems.
- Pressure washing buildings and floors.
- Poultry houses.
- Spray cooling equipment.
- Lawn and crop irrigation.
- Evaporative cooling system/misters.
- Water circulation.
- General purpose pumping.
- Reverse osmosis - stainless steel HB4.
- Filtration - stainless steel HB4.

Ordering Information

Cast Iron Models				
GPM	HP	Single-phase		
		Model No.	Order No.	Wt.
5	1	1FHB4P5C15-S	91270515	48
8	1/2	5FHB4P8C9-S	91270809	37
	3/4	7FHB4P8C11-S	91270811	42
12	3/4	7FHB4P12C7-S	91271207	40
	1	1FHB4P12C9-S	91271209	44
16	1	1FHB4P16C7-S	91271607	43
22	1.5	15FHB4P22C7-S	91272207	50

Note: Single-phase 1/2 - 2 hp motors rated 115/230 Volts.

Stainless Steel Models				
GPM	HP	Single-phase		
		Model No.	Order No.	Wt.
5	1	1FHB4P5S15-S	91274822	48
8	1/2	5FHB4P8S9-S	91274830	37
	3/4	7FHB4P8S11-S	91274848	42
12	3/4	7FHB4P12S7-S	91274855	40
	1	1FHB4P12S9-S	91274863	44
16	1	1FHB4P16S7-S	91274871	43
22	1.5	15FHB4P22S7-S	91274889	50

Cast Iron Models Feature:

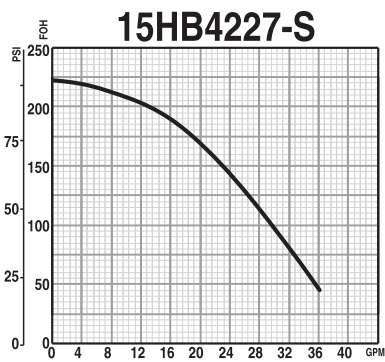
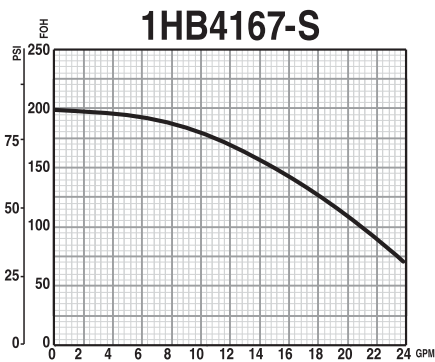
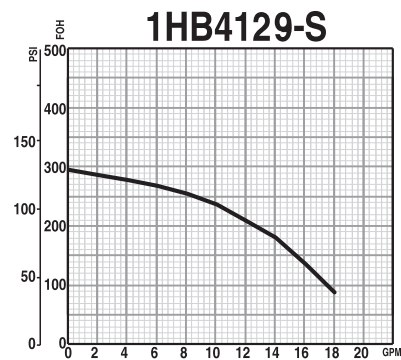
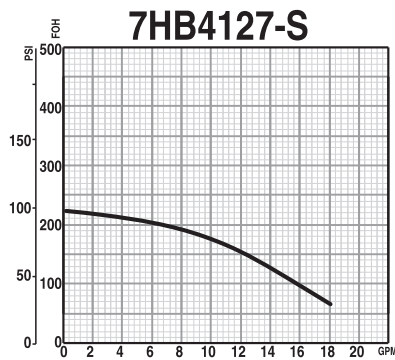
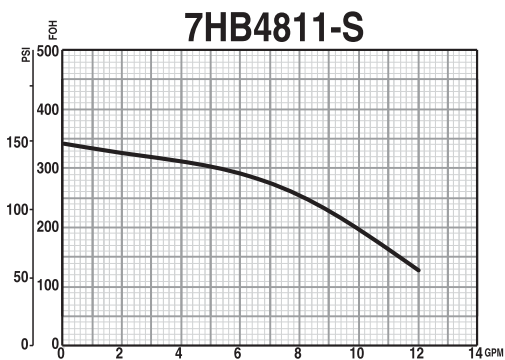
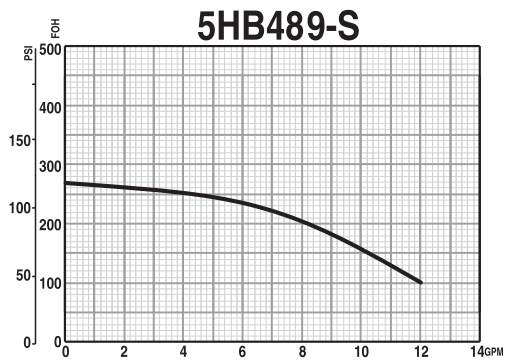
- Custom o-ring seal for reliable high pressure sealing.
- Thermoplastic impellers and diffusers for increased efficiency.
- Open drip-proof motors.
- Standard 5/8" type 21 shaft seal.
- Durable, precision machined stainless steel shell.
- Field selectable motors - 115 V or 230 V.
- Convenient, sturdy carrying handle.
- Proven ceramic discharge bearing design for high resistance to abrasive materials and corrosion.
- Cast iron motor bracket and stainless steel discharge with 1" NPT.
- Two piece brass coupling for easy field serviceability.

Stainless Steel Models Feature:

All of the cast iron features except:

- Stainless steel motor bracket and discharge with 1" NPT.
- Two piece stainless steel coupling for easy field serviceability.
- Viton mechanical shaft seal for added chemical resistance.

HB4 Series Performance Curves



Booster Pumps

H4 Series Horizontal Booster Pumps



FPS

H4 series

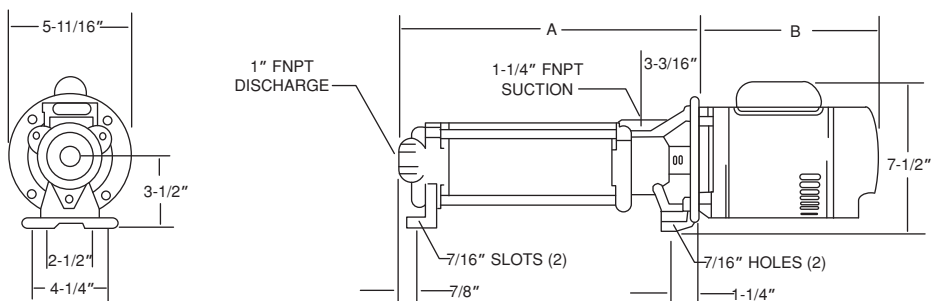
This multi-purpose pump is ideal for boosting water pressure around the home, industry or farm and is constructed with field-proven hydraulics. Available in a variety of sizes for many applications 1/3 - 3 hp and 5, 10, 18 and 25 gpm performance ranges.

Features:

- Heavy-duty cast iron discharge housing and suction bracket for long life.
- Thermoplastic impellers and diffusers are molded for increased efficiency and include floating eye seal, ceramic shaft sleeve and rubber discharge bearing.
- Stainless steel shell and shaft for increased durability.
- Shaft coupling for easy serviceability.
- Tie-rod construction for easy disassembly.
- Cast iron support foot for extra stability.
- Open drip-proof motors.
- 1/3 and 1/2 hp models have 6' grounded cord and carrying handle.
- Maximum water temperature is 120 °F.
- Maximum operating pressure is 400 psi.
- Handles up to 150 psi incoming pressure and handles up to 10' of suction lift.

Dimensions		
Model	A	B
3FH4P5-7	14-3/16	10.19
5FH4P5-10	16-9/16	10.44
7FH4P5-14	19-3/4	11.19
1FH4P5-18	22-13/16	11.44
3FH4P10-4	12-1/4	10.19
5FH4P10-6	14-1/16	10.44
7FH4P10-9	16-11/16	11.19
1FH4P10-12	19-3/8	11.44
15FH4P10-16	22-13/16	11.94
5FH4P18-5	13-15/16	10.44
7FH4P18-7	16-1/6	11.19
1FH4P18-9	18-3/16	11.44
15FH4P18-12	21-5/6	11.94
2FH4P18-15	24-1/2	11.66
7FH4P25-F	14-13/16	11.19
1FH4P25-6	16-1/16	11.44
15FH4P25-9	19-3/4	11.94
2FH4P25-11	22-3/16	11.66
3FH4P25-16	28-1/4	12.66

Note: Dimensions will vary according to motor manufacturer.



Booster Pumps

H4 Series Ordering Information

H4 Horizontal Booster Pumps with Open Drip-Proof Motors							
GPM	HP	Single-phase			Three-phase - 208-230/460 Volt		
		Model No.	Order No.	W	Model No.	Order No.	W
5	1/3	3FH4P57-S	91241507	35	3FH4P57-T	91243507	35
	1/2	5FH4P510-S	91241510	37	5FH4P510-T	91243510	37
	3/4	7FH4P514-S	91241514	42	7FH4P514-T	91243514	41
	1	1FH4P518-S	91241518	46	1FH4P518-T	91243518	44
10	1/3	3FH4P104-S	91242104	25	3FH4P104-T	91243104	31
	1/2	5FH4P106-S	91242106	36	5FH4P106-T	91243106	36
	3/4	7FH4P109-S	91242109	39	7FH4P109-T	91243109	38
	1	1FH4P1012-S	91242112	45	1FH4P1012-T	91243112	43
	1.5	15FH4P1016-S	91242116	51	15FH4P1016-T	91243116	51
18	1/2	5FH4P185-S	91242805	36	5FH4P185-T	91243805	36
	3/4	7FH4P187-S	91242807	39	7FH4P187-T	91243807	38
	1	1FH4P189-S	91242809	43	1FH4P189-T	91243809	42
	1.5	15FH4P1812-S	91242812	51	15FH4P1812-T	91243812	49
	2	2FH4P1815-S	91242815	55	2FH4P1815-T	91243815	55
25	3/4	7FH4P255-S	91243505	38	7FH4P255-T	91244505	37
	1	1FH4P256-S	91243506	42	1FH4P256-T	91244506	40
	1.5	15FH4P259-S	91243509	49	15FH4P259-T	91244509	47
	2	2FH4P2511-S	91243511	54	2FH4P2511-T	91244511	54
	3	3FH4P2516-S	91243516	65	3FH4P2516-T	91244516	64

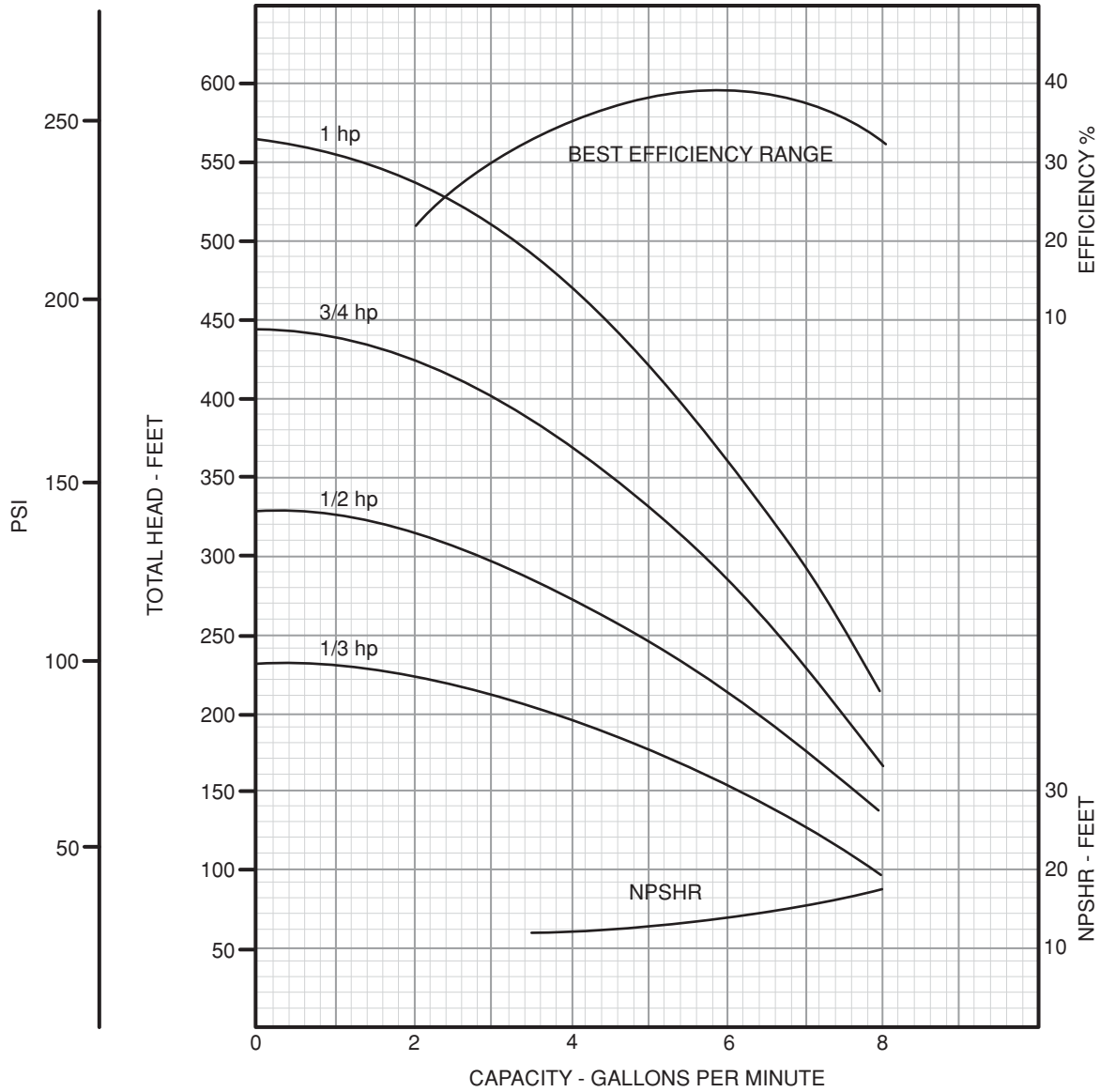
Note: Single-phase 1/3 - 2 hp motors rated 115/230 V. Single-phase 3 hp motor rated 230 V. Three-phase motors rated 208-230/460 V.

H4 Booster Pump Ends					H4 Booster Pumps - 575 Volt		
GPM	HP	Pump Ends			Three-phase - 575 Volt		
		Model No.	Order No.	W	Model No.	Order No.	W
5	1/3	3FH4P57	91240507	22	3FH4P57-T5	91244507	35
	1/2	5FH4P510	91240510	23	5FH4P510-T5	91244510	37
	3/4	7FH4P514	91240514	25	7FH4P514-T5	91244514	41
	1	1FH4P518	91240518	26	1FH4P518-T5	91244518	44
10	1/3	3FH4P104	91241004	17	3FH4P104-T5	91244104	31
	1/2	5FH4P106	91241006	22	5FH4P106-T5	91244106	36
	3/4	7FH4P109	91241009	21	7FH4P109-T5	91244109	38
	1	1FH4P1012	91241012	24	1FH4P1012-T5	91244112	43
	1.5	15FH4P1016	91241016	26	15FH4P1016-T5	91244116	51
18	1/2	5FH4P185	91241805	22	5FH4P185-T5	91244805	36
	3/4	7FH4P187	91241807	22	7FH4P187-T5	91244807	38
	1	1FH4P189	91241809	23	1FH4P189-T5	91244809	42
	1.5	15FH4P1812	91241812	25	15FH4P1812-T5	91244812	49
	2	2FH4P1815	91241815	27	2FH4P1815-T5	91244815	55
25	3/4	7FH4P255	91242505	22	7FH4P255-T5	91245505	37
	1	1FH4P256	91242506	22	1FH4P256-T5	91245506	40
	1.5	15FH4P259	91242509	24	15FH4P259-T5	91245509	47
	2	2FH4P2511	91242511	25	2FH4P2511-T5	91245511	54
	3	3FH4P2516	91242516	28	3FH4P2516-T5	91245516	64

Booster Pumps

H4 Series

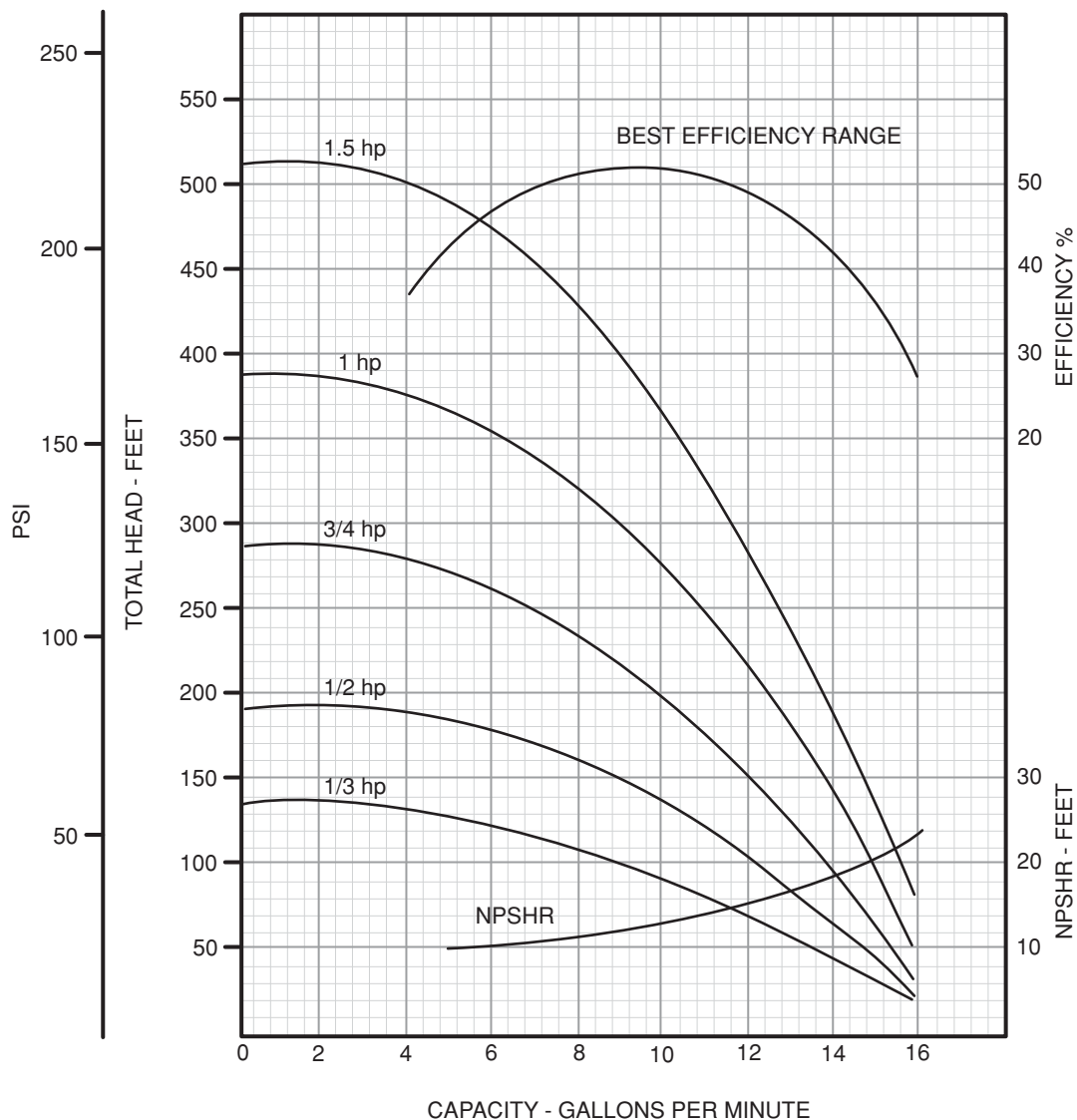
5 GPM Performance Curves and Chart



HP	Discharge Pressure at Pump with No Lift (Capacities in Gallons per Minute)																			Max Pres. (PSI)	
	40	50	60	70	80	90	100	110	120	130	140	150	160	170	180	190	200	210	220		230
1/3	8.1	7.3	6.5	5.6	4.5	3.1															98
1/2			7.9	7.3	6.8	6.2	5.6	4.8	4.0	2.9											140
3/4					7.8	7.4	7.0	6.6	6.1	5.7	5.2	4.6	4.1	3.4	2.5						192
1							7.8	7.5	7.2	6.8	6.5	6.2	5.8	5.4	5.1	4.7	4.2	3.7	3.1	2.3	244

H4 Series

10 GPM Performance Curves and Chart

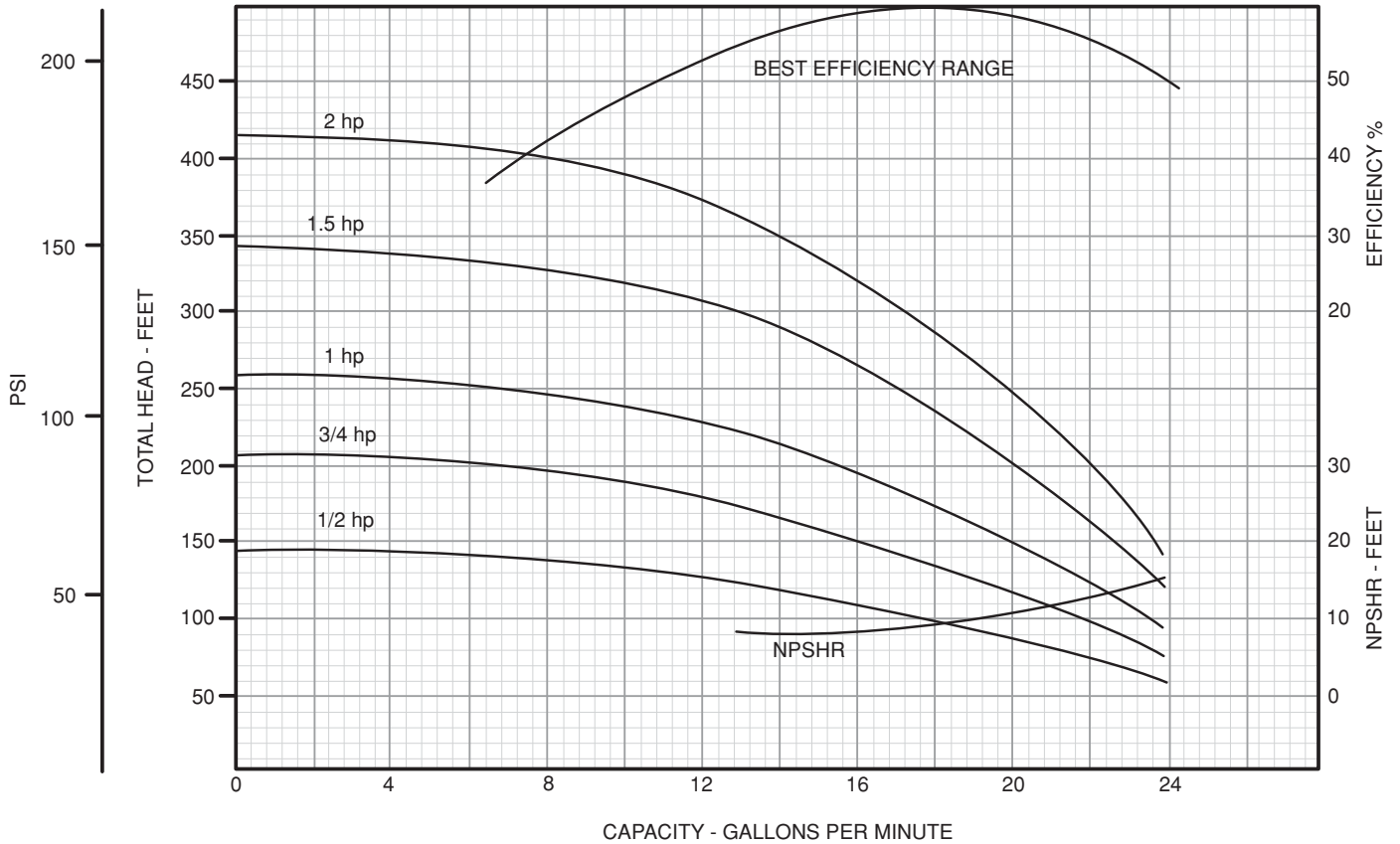


HP	Discharge Pressure at Pump with No Lift (Capacities in Gallons per Minute)																				Max Pres. (PSI)
	20	30	40	50	60	70	80	90	100	110	120	130	140	150	160	170	180	190	200	210	
1/3	14.4	12.6	10.5	7.5																	56
1/2	15.3	14.2	13.1	11.8	10.3	8.3	4.6														84
3/4	15.8	15.1	14.4	13.6	12.7	11.8	10.8	9.7	8.4	6.9	4.3										125
1	16.2	15.7	15.2	14.6	14.1	13.5	12.9	12.2	11.5	10.8	9.9	8.9	7.8	6.3	4.2						166
1.5	16.7	16.2	15.8	15.3	14.9	14.4	14.0	13.5	13.1	12.6	12.1	11.6	11.0	10.4	9.8	9.1	8.4	7.6	6.6	5.3	220

Booster Pumps

H4 Series

18 GPM Performance Curves and Chart



HP	Discharge Pressure at Pump with No Lift (Capacities in Gallons per Minute)																Max Pres. (PSI)
	20	30	40	50	60	70	80	90	100	110	120	130	140	150	160	170	
1/2	24.3	21.7	18.1	13.7													60
3/4	25.2	24.0	22.4	20.3	17.6	14.4	10.0										88
1	25.7	24.7	23.8	22.2	20.5	18.4	16.2	13.8	10.2	4.0							111
1.5	26.0	25.4	24.8	24.0	23.3	22.3	21.1	19.8	18.2	16.4	14.4	12.0	8.2				148
2	26.5	26.0	25.4	24.7	24.0	23.4	22.5	21.6	20.5	19.4	18.1	16.7	15.3	13.6	11.6	8.4	179